



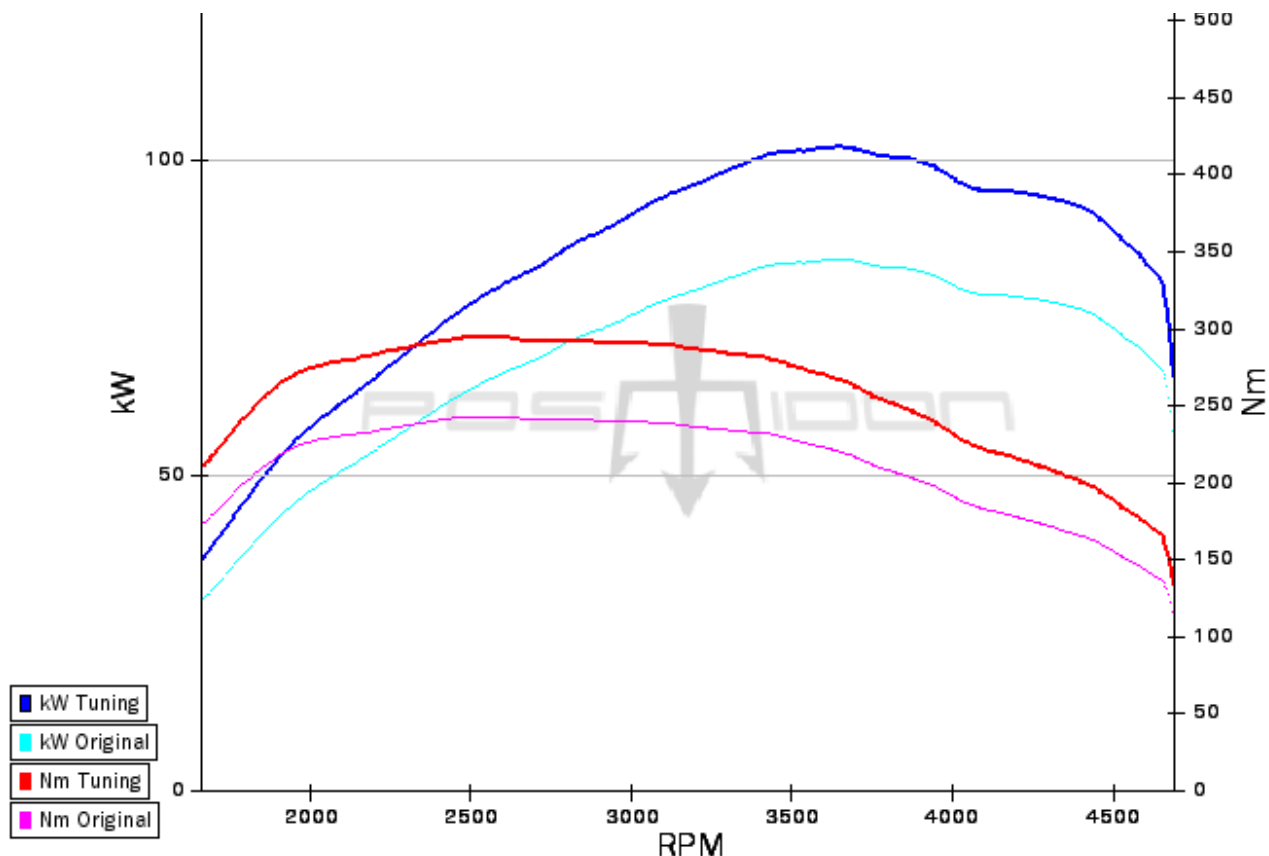
Datasheet

Product number: A180W176D01_LS100

Model: A180 CDI
 Series: W176
 Year: 2012-2018
 Engine: OM651DE18LAred.
 Fuel: Diesel
 Charge: Turbo

Also known as: A180 CDI BlueEFFICIENCY

	Original	Posaidon
Displacement	1796 cm ³	1796 cm ³
Power	80 kW = 108 HP	100 kW = 136 HP
Torque	250 Nm @ 1400-2800 RPM	300 Nm @ 1600-3000 RPM
Top speed	190 km/h	No VMax limitation



Environment	Pressure: 1001 mBar	Temperature: 22.3 °C
Engine power (measured)	104.4 kW = 142 HP	
Wheel power (measured)	94.4 kW = 128 HP	
Power loss (measured)	-10.1 kW @ 168.8 km/h @ 4667 RPM	
Torque engine (corrected)	294 Nm @ 89.6 km/h @ 2477 RPM	

All information is subject to change. Real performance values will vary depending on the vehicle and its configuration. (DIN 70020)

